

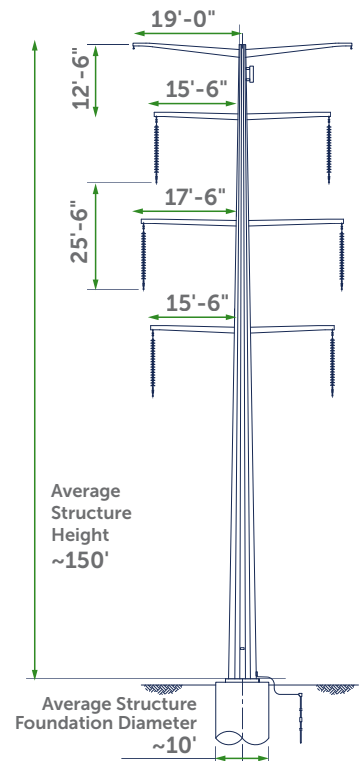
TYPICAL MONOPOLE STRUCTURES

The typical structure will be 150 feet tall.

The structure type may vary across the project but primarily will be comprised of single pole, self-weathering steel with double circuit capability. **Otter Tail Power Company** and **Missouri River Energy Services** expect to only install one circuit at this time.

There will be three phases of conductors and two overhead shield wires — one will be an optical ground wire (OPGW) and the other stranded steel (overhead ground wire).

Image shown is an example of a similar double-circuit structure.



CONSTRUCTION PROCESS

ONGOING OUTREACH

Long before construction begins, right-of-way agents will be coordinating with landowners, local government officials, and other stakeholders. You will be involved throughout the process, and if you have any questions or concerns, our project team will work with you!



1
Surveys



2
Temporary Access



3
Foundation Drilling & Pouring



4
Structure Setting



5
Conductor Stringing



6
Restoration

CONTACT YOUR RIGHT-OF-WAY AGENT FOR ANY QUESTIONS OR CONCERNS