



BSSA CURRENT

SUMMER 2025



▶ GREETINGS FROM THE BSSA TEAM

The Big Stone South to Alexandria (BSSA) project is continuing to move through the Minnesota Public Utilities Commission (MN PUC) regulatory process. Environmental review is underway, and there will be another opportunity for public input this fall to help the MN PUC determine the designated route of the transmission line.

The South Dakota Public Utilities Commission (SD PUC) has approved a Facility Permit for the portion of the transmission line in South Dakota.



SAFETY SPOTLIGHT

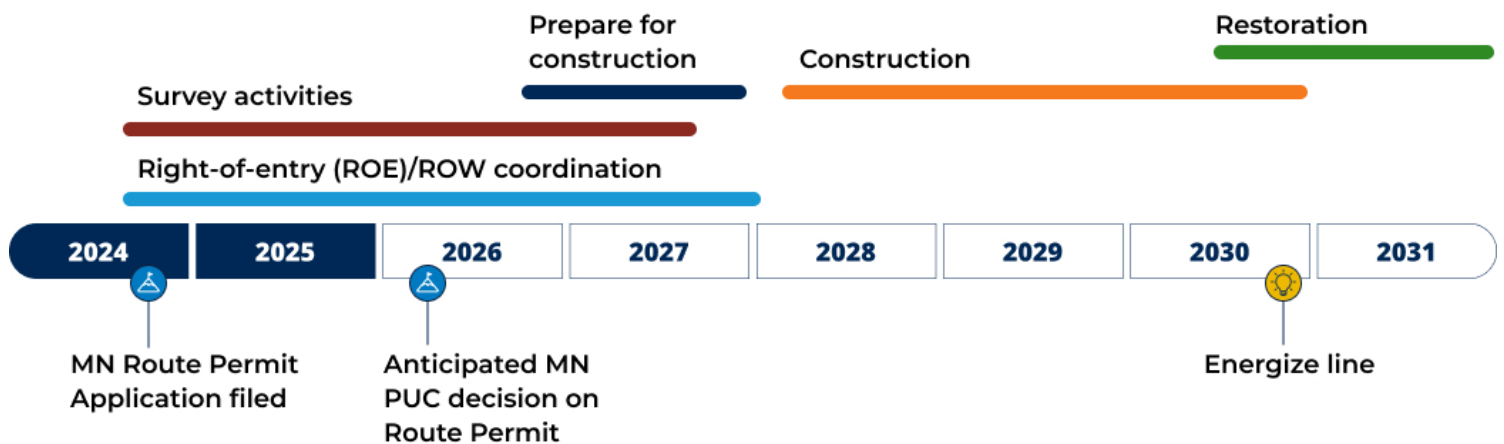


Summer weather is here! Stay safe in the heat by taking frequent water breaks and checking the air quality index before going outside. Wear lightweight clothing, keep water readily available, and stay hydrated.

To check your air, visit airnow.gov or scan the QR code.



▶ ANTICIPATED SCHEDULE



What comes next?

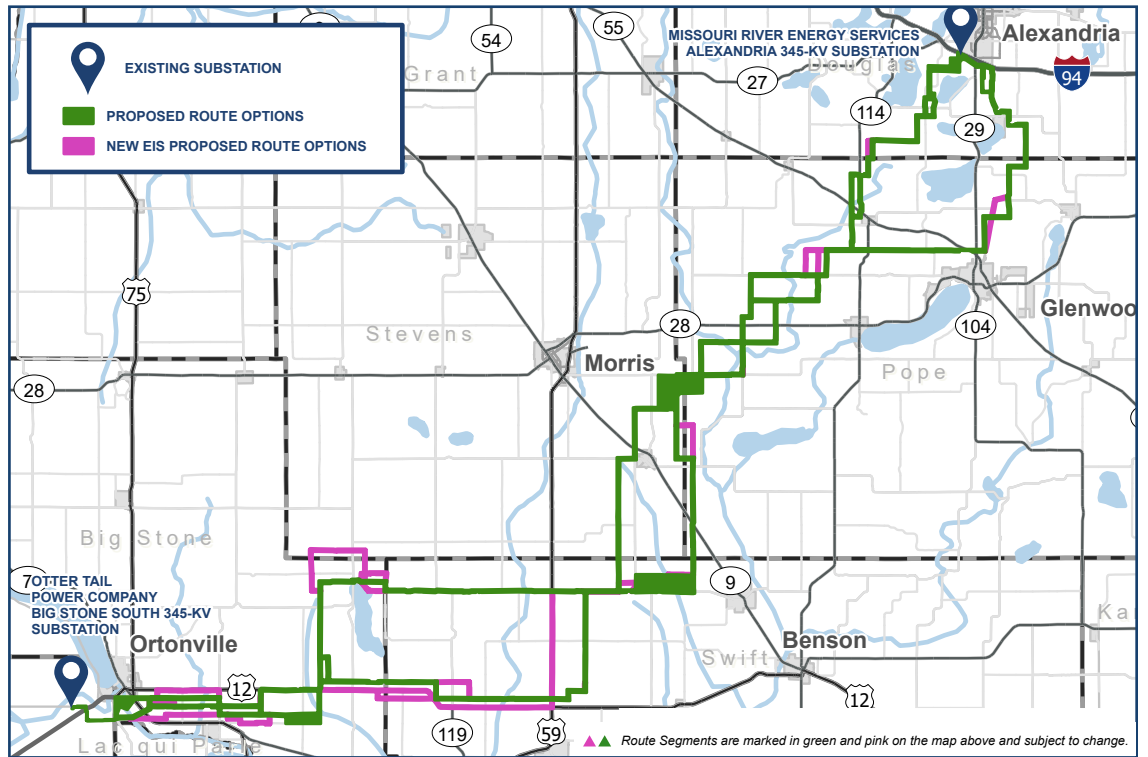
Our team, including right-of-way (ROW) agents and other project representatives, will continue to work closely with landowners, local government officials, and other stakeholders as we prepare for construction.

We expect to begin construction in Spring 2028, with the new transmission line tentatively planned for completion by the end of 2030.

MAPS

Minnesota

Routes shown in pink are new proposed route options submitted during the public information/scoping meetings held in January 2025 and were approved for inclusion in the scope of the Environmental Impact Statement (EIS) by the MN PUC in April 2025. The route options shown in green were included within the Route Permit application submitted to the MN PUC in October 2024. All route options will be considered as part of the EIS.



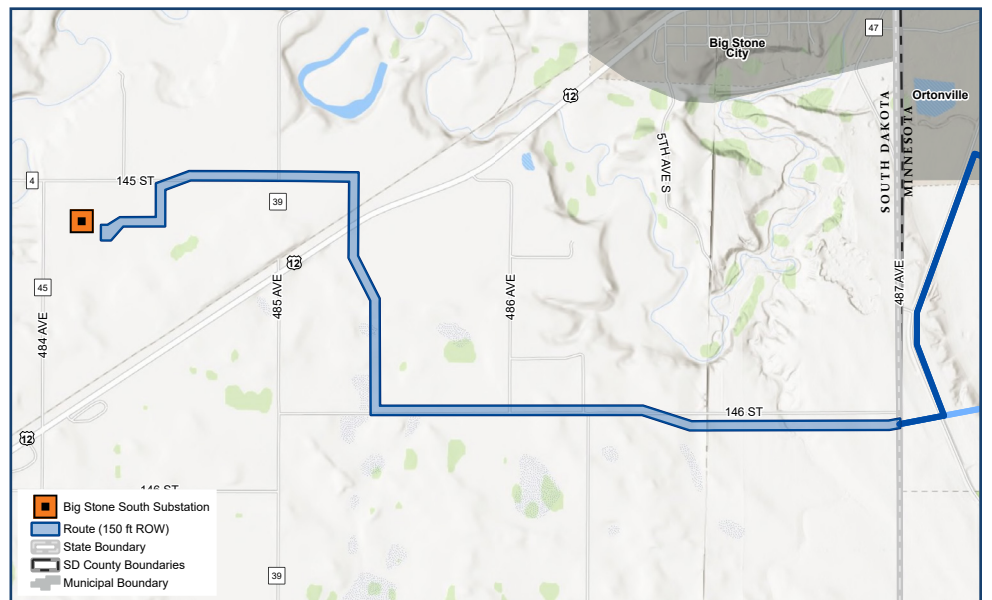
Visit the MN PUC eDocket to see more information on public comments and route scoping recommendations. (Docket number: E017, ET10/TL-23-160)

South Dakota

The SD PUC approved a Facility Permit for the route shown in blue. This portion of the project's route is about 3.5 miles long.



We launched our brand new Regulatory and Landowner Resources pages! Please check out our website to learn more.



COORDINATING WITH LANDOWNERS

Once survey permission has been obtained, we anticipate field surveys to begin this summer in select areas and ramp up significantly in the second half of 2026. Our right-of-way agents will continue to coordinate with landowners and, upon request, their respective tenants, prior to and during field surveys to ensure everyone is informed.

▶ REGULATORY PROCESS

Minnesota (Docket number: E017, ET10/TL-23-160)

Updates

In January 2025 staff from the MN PUC and the Department of Commerce, Energy Environmental Review and Analysis (EERA) unit held six public information and scoping meetings throughout the project area. These meetings gave people a chance to learn more about the project and provide their input on what issues and route options should be studied in the EIS. On May 6, 2025, the MN PUC issued its Scoping Decision, identifying the route options and issues that will be evaluated in the EIS.

What comes next?

We expect the EERA to complete and publish the draft of the EIS (DEIS) in September 2025. Following its release, the MN PUC will establish a public comment period to allow interested stakeholders the opportunity to offer comments on the DEIS, route options, and potential conditions to be included in a Route Permit. In addition, we expect the Administrative Law Judge to host public hearing(s) in the fall for the public to provide comments on the DEIS.

The MN PUC will provide notice of the public hearing(s) to all affected landowners along the proposed route options, and any newly proposed route options included in the Scoping Decision. Public notices will also be placed in newspapers in each county where the proposed route options cross.

Once the DEIS is available, you'll be able to

- Share feedback on the DEIS, including suggested changes for the Final EIS.
- Comment on route options, propose conditions for the Route Permit (if granted), and provide input on specific proposed route options.
- Submit comments in person at public hearing(s), by mail, email, or online through the state's website:
eera.web.commerce.state.mn.us/web/project/15867.

South Dakota (eDocket number: EL24-015)

Updates

On January 28, 2025, the SD PUC approved a Facility Permit for the South Dakota portion of the BSSA project. This stretch is about 3.5 miles of the project. We're pleased to reach this significant milestone and appreciate the collaboration and cooperation with landowners, agencies, and stakeholders in securing this permit. This transmission line represents an important infrastructure improvement needed to meet the growing energy needs of customers throughout the region in a reliable and cost-effective manner.

Public information and scoping meeting participation by the numbers

- About **150** attendees
- Over **100** comments submitted
- **18** new route options accepted for consideration



► FREQUENTLY ASKED RIGHT-OF-WAY (ROW) QUESTIONS

What's your preferred route in Minnesota?

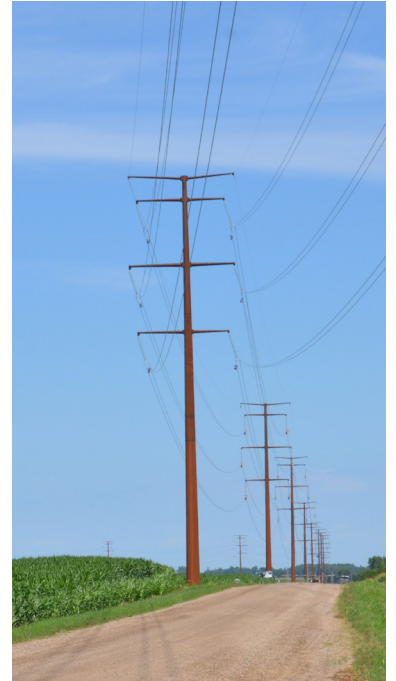
We haven't identified a preferred route; our Route Permit application includes multiple options for the Minnesota Public Utilities Commission (MN PUC) to consider. The MN PUC will determine the final route, factoring in stakeholder and landowner input. An Environmental Impact Statement (EIS) will assess the impacts of all studied routes, including newly proposed route options by the public. During public hearings and the comment period, stakeholders can share their route preferences. We expect the MN PUC to make a final decision by mid-2026, and we'll provide updates as more information becomes available.

Will landowners be compensated for crop damage during the construction or maintenance of the transmission line?

Yes. If crops, fences, or other property are damaged during construction or future maintenance activities, landowners will be compensated or we'll perform any necessary repairs. Working with the landowner on a case-by-case basis, we'll conduct a damages assessment and provide compensation.

What things are not allowed within an easement area?

Buildings, structures, wells, trees, other above-ground permanent objects, and flammables are examples of things not allowed within easement areas to ensure the safe construction, operation, and maintenance of the transmission facilities. Landowners may continue to use the easement property as long as the use does not threaten to interfere with or endanger the facilities or people in and around the facilities. Our ROW agents are happy to discuss what is and isn't allowed within the easement area if landowners have specific questions.



HAVE QUESTIONS ABOUT THE PROJECT?

www.BigStoneSouthtoAlexandria.com/contact
connect@BigStoneSouthtoAlexandria.com
(800) 598-5587

► WELCOME TO THE SECOND ISSUE OF BSSA CURRENT!

What's inside:

- Message from the project team
- Latest project schedule
- Minnesota Environmental Impact Statement Scoping Decision
- Regulatory process updates
- Coordination with landowners

215 S. Cascade Street
P.O. Box 496
Fergus Falls, MN
56538-0496

